

# Sarajevo | Boston

---

Fall 2010



Students:

Phillip Baker

Joseph Barbato

Zack Benson

Anthony Cavalieri

Ashley Cunha

Chelsea McCosh

Jennifer Pennell

Amanda Rekemeyer

Adam Schuck

Professor:

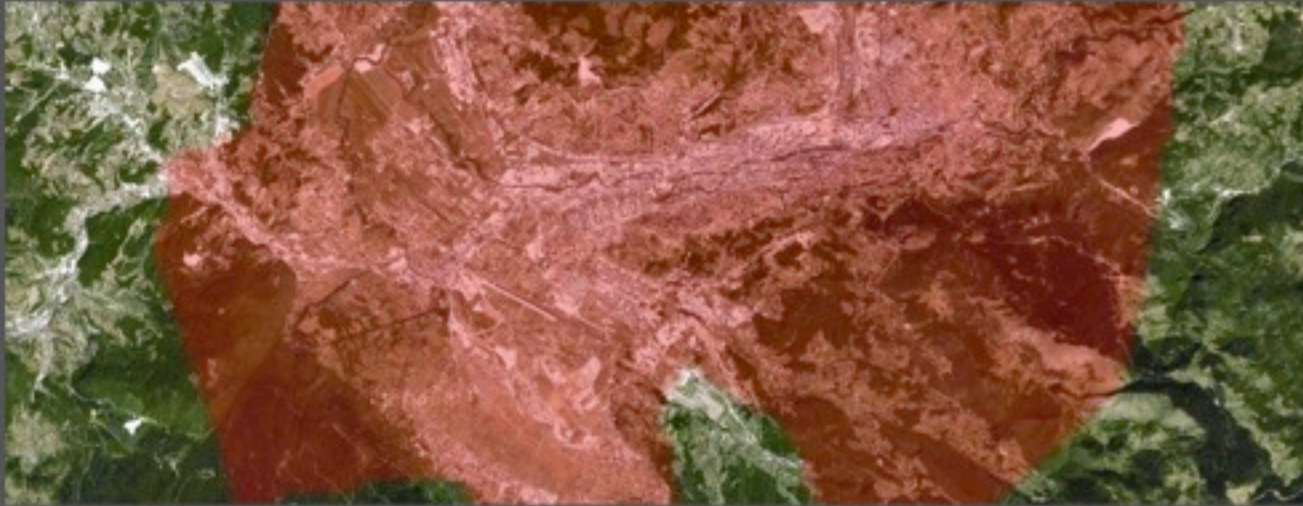
Andrew Johnston

- 1.0 City Comparison
- 2.0 Marks on the Land
- 3.0 Urban Disjuncture
- 4.0 Scale + Experience
- 5.0 Connection + Reintegration

- 1.1 Urban Comparison
- 1.2 Urban Development - Sarajevo
- 1.3 Urban Development - Boston
- 1.4 Mass Housing - Sarajevo
- 1.5 Mass Housing - Boston

# Urban Comparison

Sarajevo | Boston



- Sarajevo Statistics
- Capital of Bosnia
  - 54.6 Square Miles
  - Population: 305,000
  - 4 “Neighborhoods”
  - 1,640’ Above Sea Level



- Boston Statistics
- Capital of Massachusetts
  - 48.4 Square Miles
  - Population: 645,000
  - 21 “Neighborhoods”
  - 141’ Above Sea Level

# Urban Development - Sarajevo

Sarajevo | Boston



## Sarajevo - 1500

Stari Grad, the oldest area of the city which dates back to the Ottoman control in the 16<sup>th</sup> century, is characterized by many small buildings clustered together very tightly.



# Urban Development - Sarajevo

Sarajevo | Boston



Sarajevo - 1800

The Western side of Stari Grad was mostly developed during the Austro-Hungarian control. The city blocks are densely packed with courtyard happening behind and between buildings.



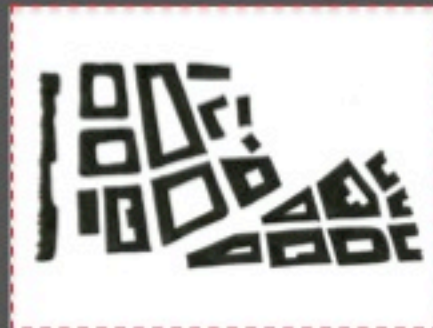
# Urban Development - Sarajevo

Sarajevo | Boston



## Sarajevo - 1900

The area of the city known as Centar was mostly developed during the 1900s. The buildings are comprised of solid street walls with large courtyard spaces in the center of the blocks.



# Urban Development - Sarajevo

Sarajevo | Boston



## Sarajevo - 1960

In the 1960s, the Novo Sarajevo section of the city was developed. Mid-rise community housing areas were built fueled by the city's massive growth. These areas contain large, tall buildings built close together with common areas between them.

# Urban Development - Sarajevo

Sarajevo | Boston



## Sarajevo - 1970

The building happening during the 1970s was also affected by the large growth. Novi Grad contains large complexes of tall housing buildings with small footprints and vast expanses of common space between them.

# Urban Development - Boston

Sarajevo | Boston

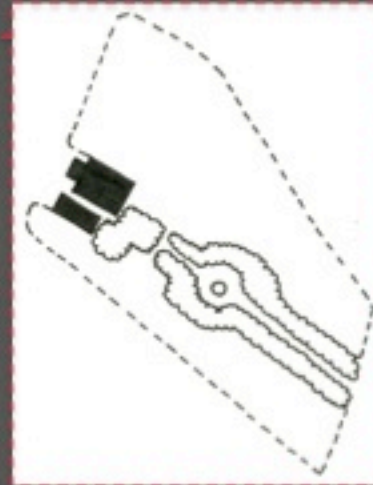


## Boston - 1630

The Paul Revere House is the oldest building in Boston and is the only building from the 1630s that is still left standing.

# Urban Development - Boston

Sarajevo | Boston



## Boston - 1795

The Old North Church was built in 1777. It is connected to both Salem Street and Hanover Street by the Paul Revere Mall. It is one of the few buildings left from the 1700s.

# Urban Development - Boston

Sarajevo | Boston



## Boston - 1852

The area around the Boston Common in the early to mid 1800s was sparsely populated and building placement was affected by topography and the relationship to existing landmarks.

# Urban Development - Boston

Sarajevo | Boston

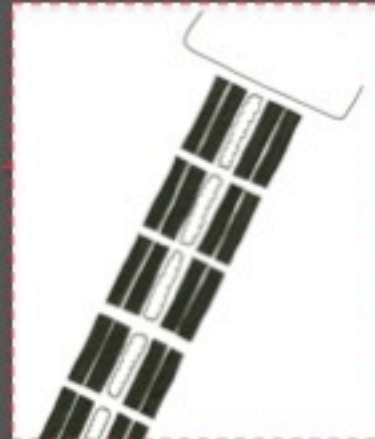


Boston - 1880

By the late 1800s, the space around the Boston Common was almost entirely built up.

# Urban Development - Boston

Sarajevo | Boston



## Boston - 1916

In the 1900s, Boston planners started using a gridded system to make city blocks. Commonwealth Avenue, the avenue to the Southwest of the Boston Commons exemplifies the starting point of this grid.

# Urban Development - Boston

Sarajevo | Boston



## Boston - 1934

Sections of the city that were originally built in the 1600s and 1700s were rebuilt in the mid 1900s using new styles of building. The Landmark Building on Federal Street to the East of the Boston Commons is an example of this.

# Urban Development - Boston

Sarajevo | Boston



## Boston - 1950

In the 1950s, Boston built many community housing projects, including the Alice Heyward Taylor complex. These clusters of mid-rise residential buildings formed heavily introverted communities throughout the city.

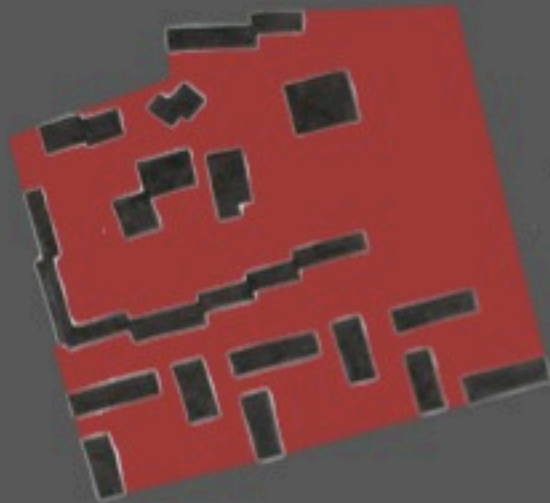


## Boston - 1995

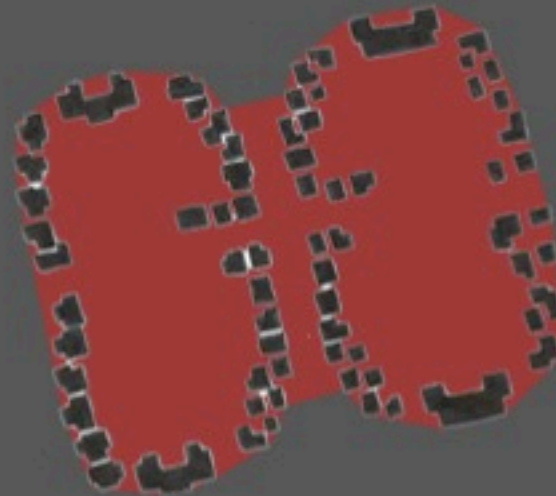
In the late 1990s, Boston tried to rebuild these community housing projects with a smaller sense of scale that related more to the families living in them. The Mission Main complex offers low-rise buildings organized in similar to a suburban neighborhood.

# Mass Housing - Sarajevo

Sarajevo | Boston



Residential Area in Novo Sarajevo



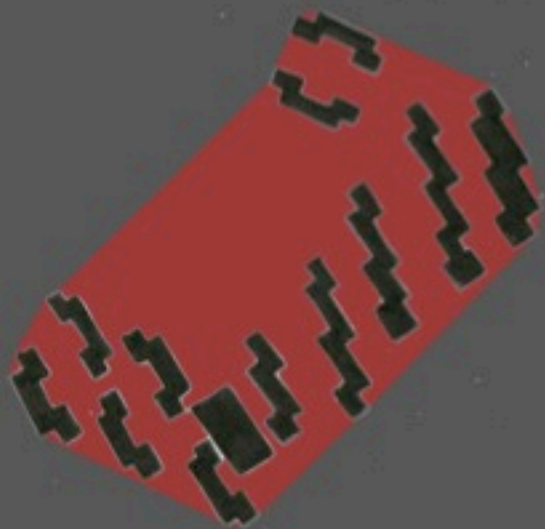
Residential Area in Novi Grad

## Community Housing in Sarajevo

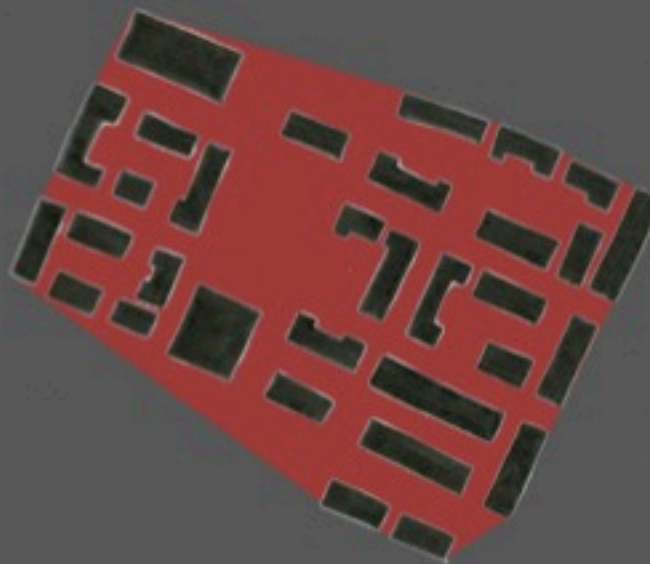
This shows the amount of open space compared to the amount of livable space the footprints of the buildings take up.

# Mass Housing - Boston

Sarajevo | Boston



Residential Area in Boston



Residential Area in Boston

## Community Housing in Boston

This shows the amount of open space compared to the amount of livable space the footprints of the buildings take up.

2.1 Built Environment

2.2 Surrounding Mountains

2.3 The Valley

2.4 The Miljacka River

2.5 Cultivated Land

# Marks on the Land

Sarajevo | Boston

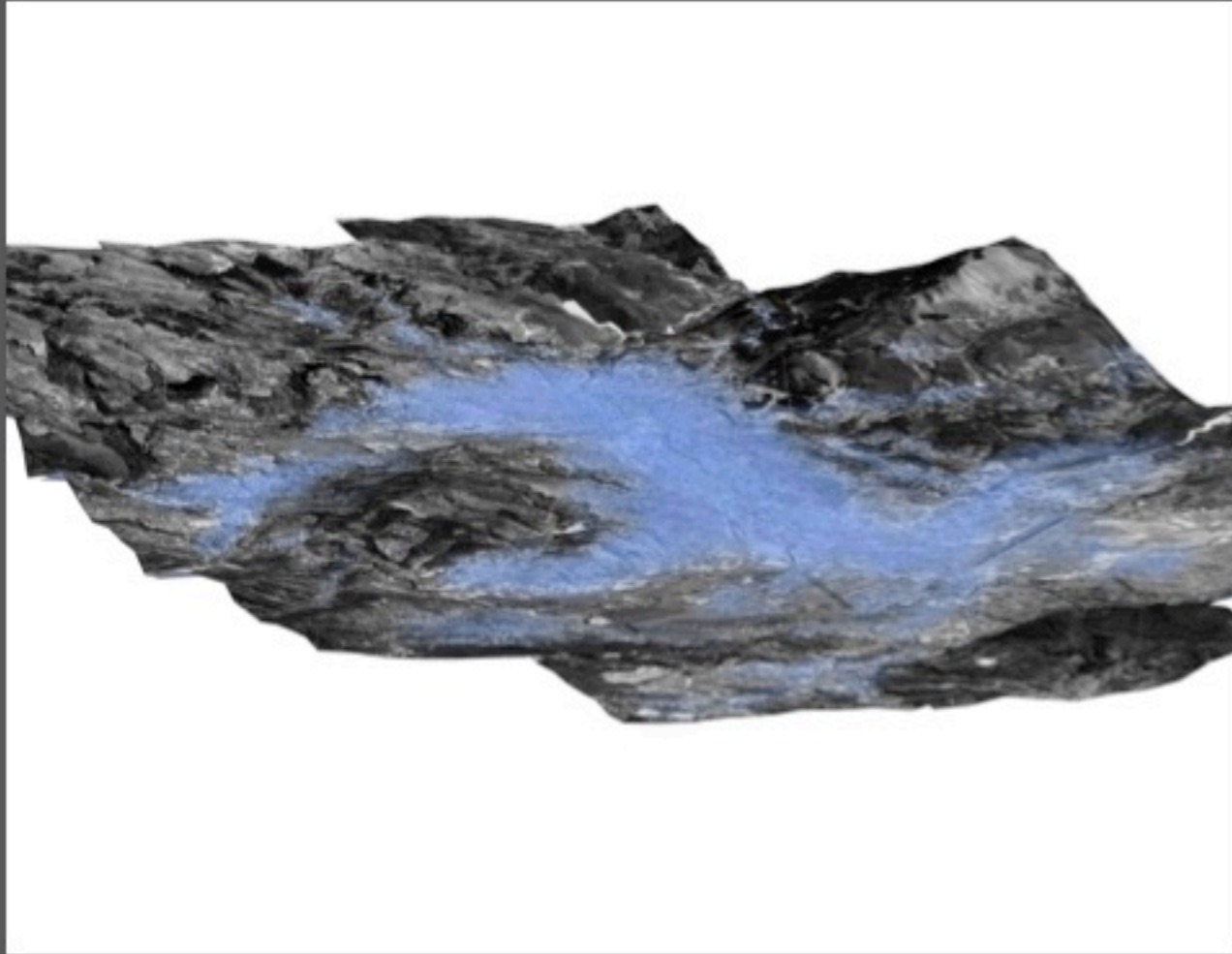


## TOPOGRAPHY MODELED

Sarajevo is placed in an extreme topographical environment.

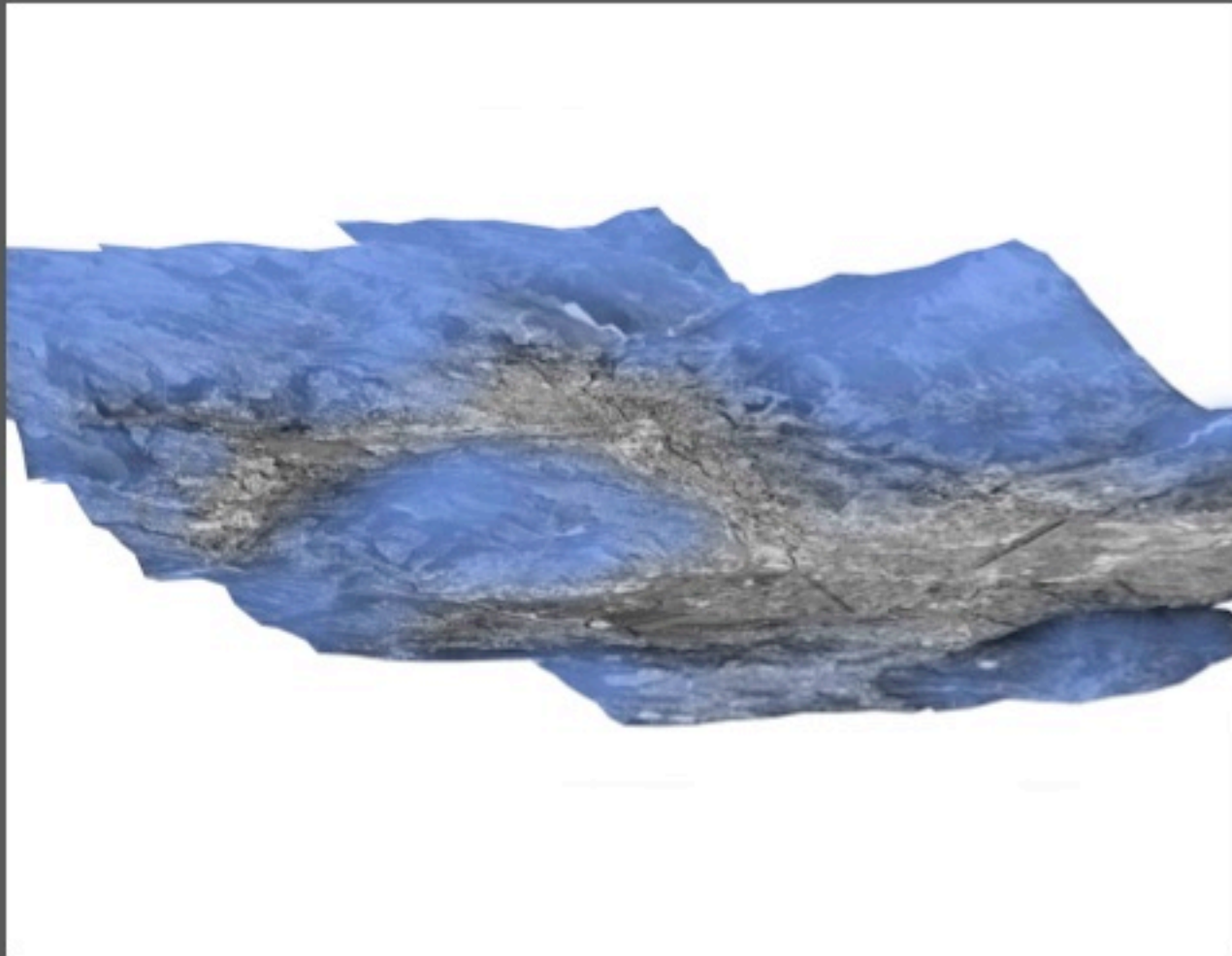
# Marks on the Land

Sarajevo | Boston



## BUILT ENVIRONMENT

Physical construction of the city

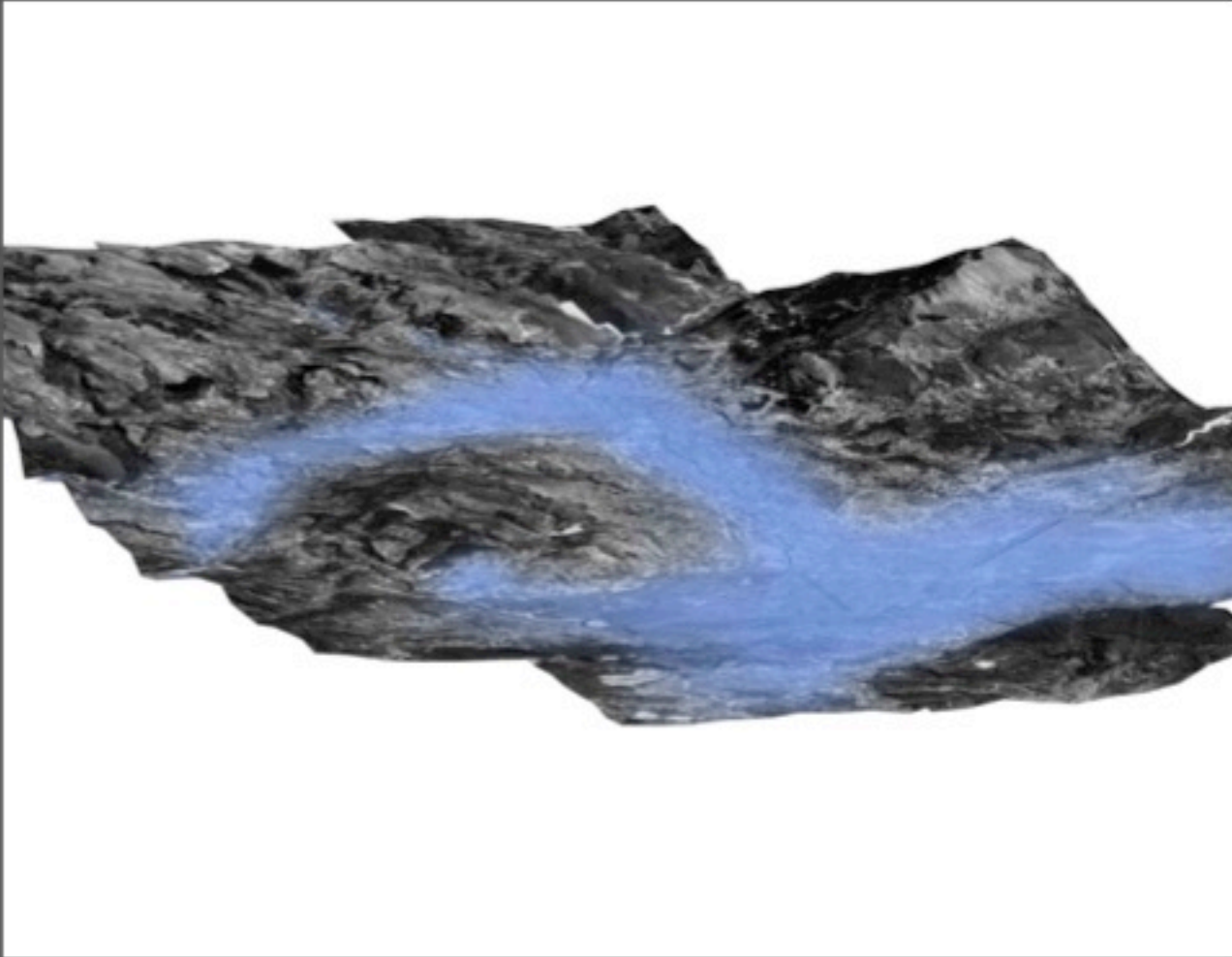


## SURROUNDING MOUNTAINS

Mountains currently hold a very small percentage of the city's built environment

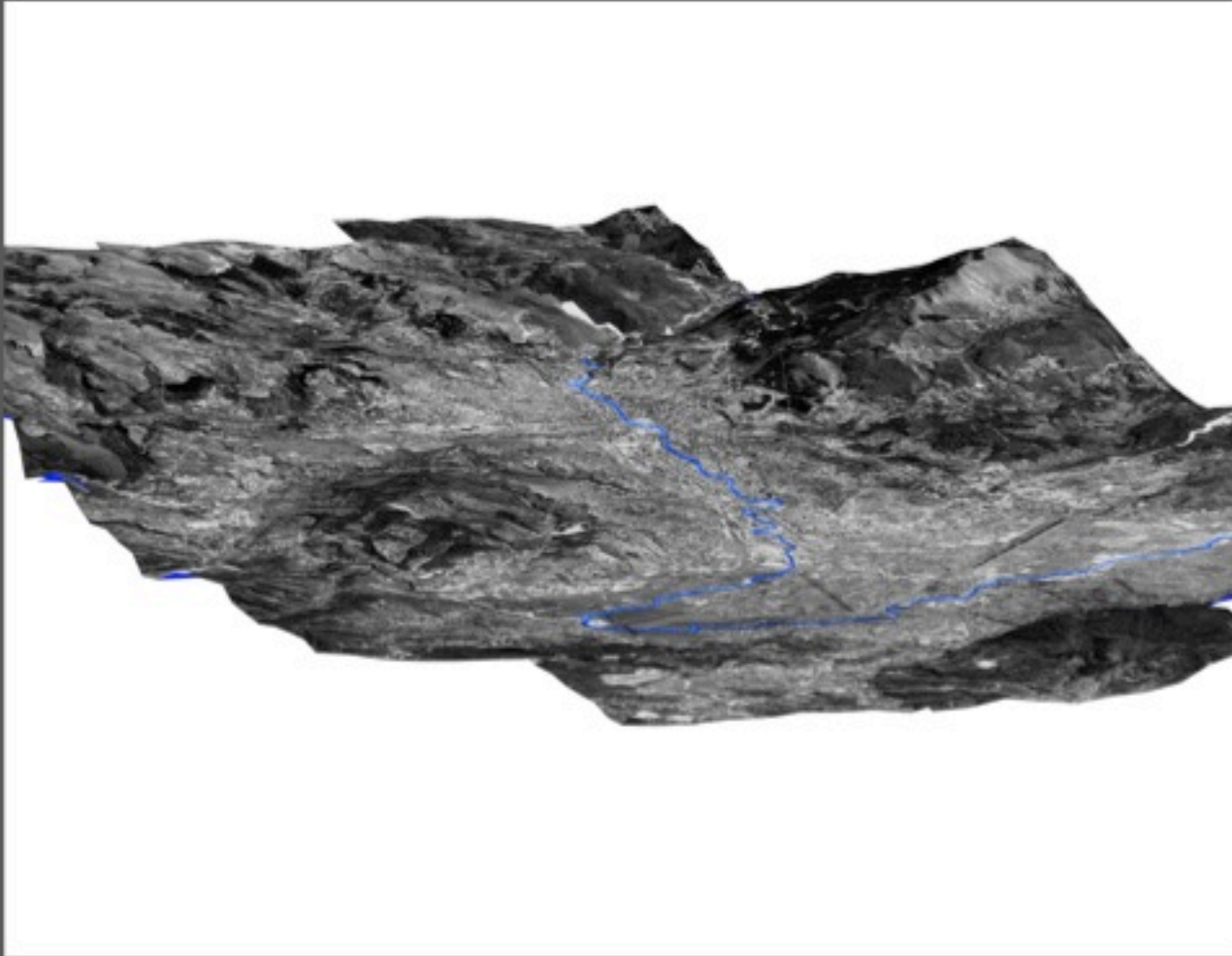
# Marks on the Land

Sarajevo | Boston



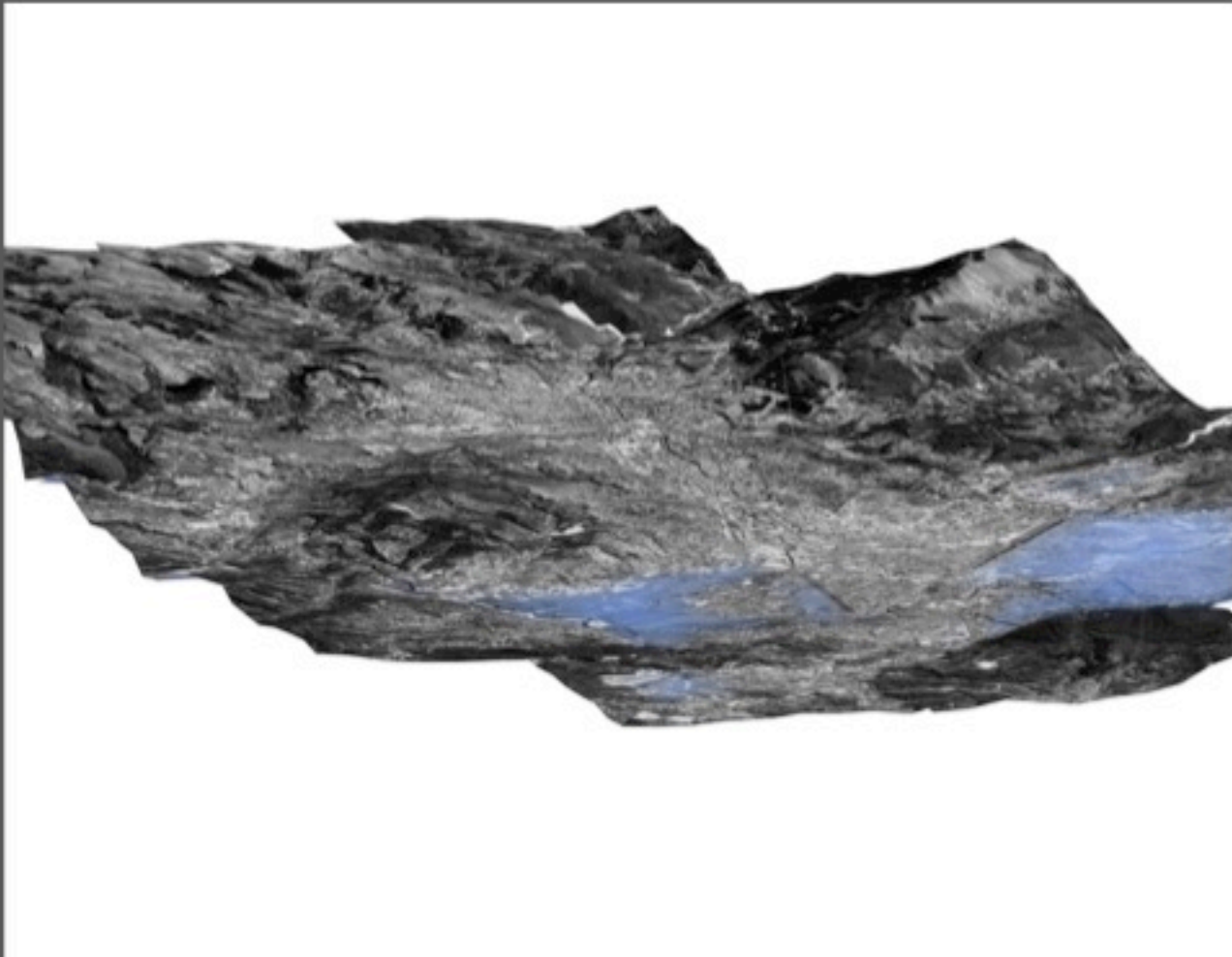
## THE VALLEY

- Holds very level ground



## THE MILJACKA RIVER

Historically and  
Geographically very important  
to the cities development



## CULTIVATED LAND

- At the river's base the valley opens, creating potential for wetlands and agricultural zones

3.1 Urban Analysis

3.2 Urban Engagement

# Urban Disjuncture

Sarajevo | Boston

## Urban Analysis: General Zones of Disjuncture



Urban Disjuncture as being defined as:

A separation based on major defining factors including...

- Building Type
- Terrain (also including a difference between the built and natural)
- Major Roadways
- Major Rivers

Sarajevo is divided into 3 major zones of disjuncture that can then be further subdivided. At the center you have the key industrial zone with the larger building types. Radiating out from this is a zone of smaller informal residential building types, and then further out is mountainous terrain.

# Urban Disjuncture

Sarajevo | Boston

## Urban Analysis: Further Exploration of Disjuncture



The center of Sarajevo is subdivided by the river and the major transportation route that runs straight across it. It is also divided by building type, to the north are mostly industrial and commercial buildings and to the south is mostly residential buildings. The elevation change between the flatlands of the valley and the slope of the mountain is another defining factor. The mountain is divided into 3 parts, an area of heavily populated residential, an area of mountainous terrain, and then an area of settlement further above that.

# Urban Disjuncture

Sarajevo | Boston

## Urban Analysis: Disjuncture in Novi Grad



Specific defining factors that break up the area of Novi Grad

- Major transportation route
- River
- Different building typology
- Terrain




# Urban Disjuncture

Sarajevo | Boston

## Urban Analysis: Space Usage Novi Grad



Specific defining factors that break up the area of Novi Grad

-  -Areas of small open space
-  -Used space
-  -Unused or Underdeveloped space

This information helps to reinforce the ideas of disjunction within the city. Clearly the areas around the socialist housing developments have very good land usage but as you get away from them it tends to break down into small pockets of space along the river and within the industrial areas.

# Urban Disjuncture

Sarajevo | Boston

## Urban Analysis: Disjuncture in Boston



- Small residential buildings (Green)
- Residential (Blue)
- Institutional and Commercial (Yellow)
- Industry and Airport (Red)

This sort of disjuncture in Boston is good because it helps to define certain neighborhoods such as North End, Beacon Hill, The Fenway area.

This also helps to keep you oriented in the city by the distinguishing building types and layout of streets. For example the street grid in the south end is a grid whereas along the commons or historical part of the city it is more erratic.

# Urban Disjuncture

Sarajevo | Boston



# Urban Disjuncture

Sarajevo | Boston

One way of engaging with urban disjuncture would be to create a connection through the zones of disjuncture.



4.1 Novi Grad Section Cut A

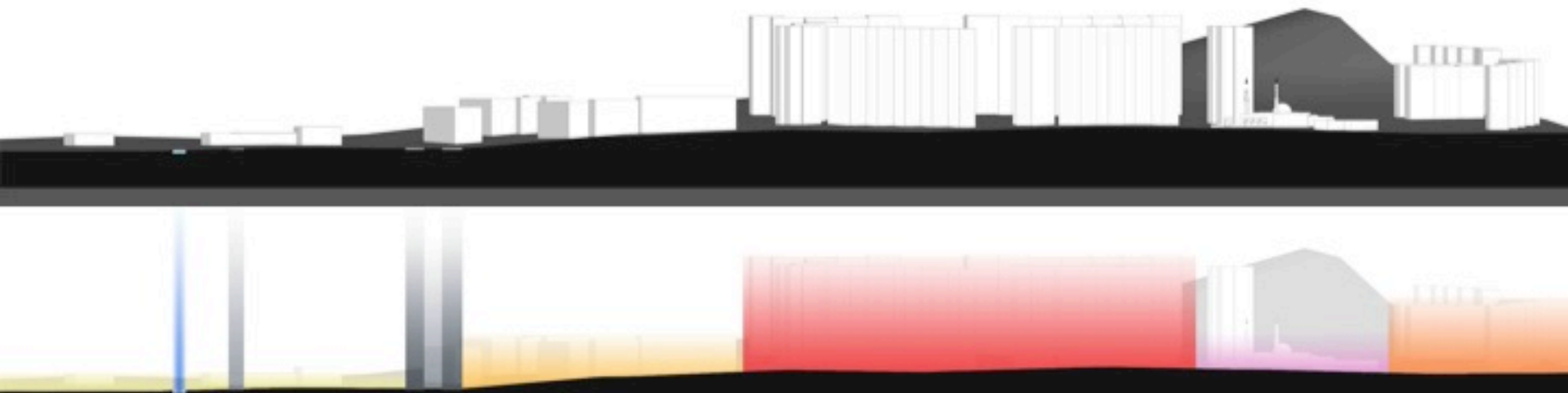
4.2 Novi Grad Section Cut B

4.3 Novi Grad Section Cut C

# Scale and Experience

Sarajevo | Boston

## NOVI GRAD SECTION CUT A



### DIAGRAM A

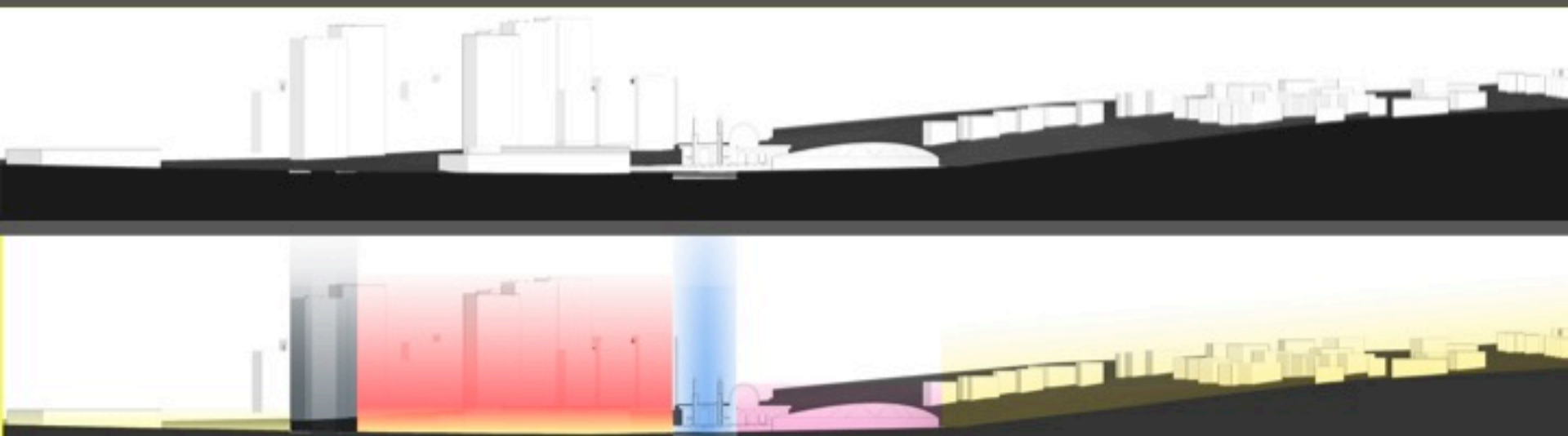
- 1-3 FLOORS
- 3-5 FLOORS
- 5+ FLOORS
- RELIGIOUS
- RIVER
- ROADS



# Scale and Experience

Sarajevo | Boston

## NOVI GRAD SECTION CUT B



### DIAGRAM B

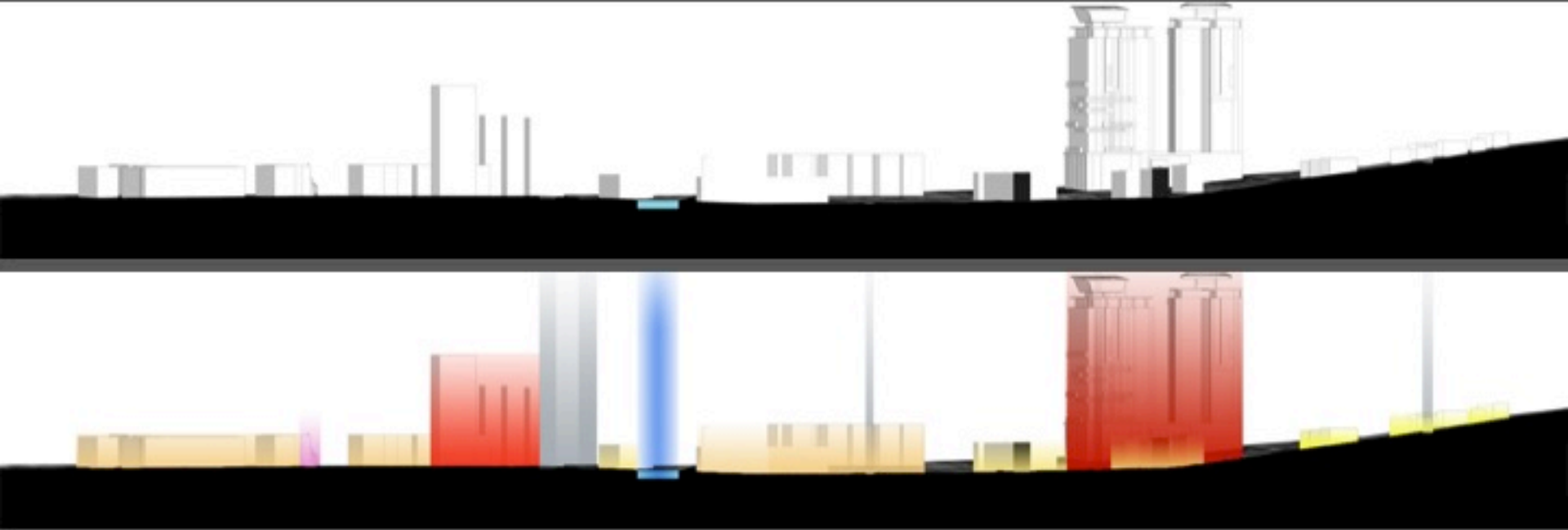
- 1-3 FLOORS
- 3-5 FLOORS
- 5+ FLOORS
- RELIGIOUS
- RIVER
- ROADS



# Scale and Experience

Sarajevo | Boston

## NOVI GRAD SECTION CUT C



### DIAGRAM C

- 1-3 FLOORS
- 3-5 FLOORS
- 5+ FLOORS
- RELIGIOUS
- RIVER
- ROADS



5.1 Boundaries + Drosscapes

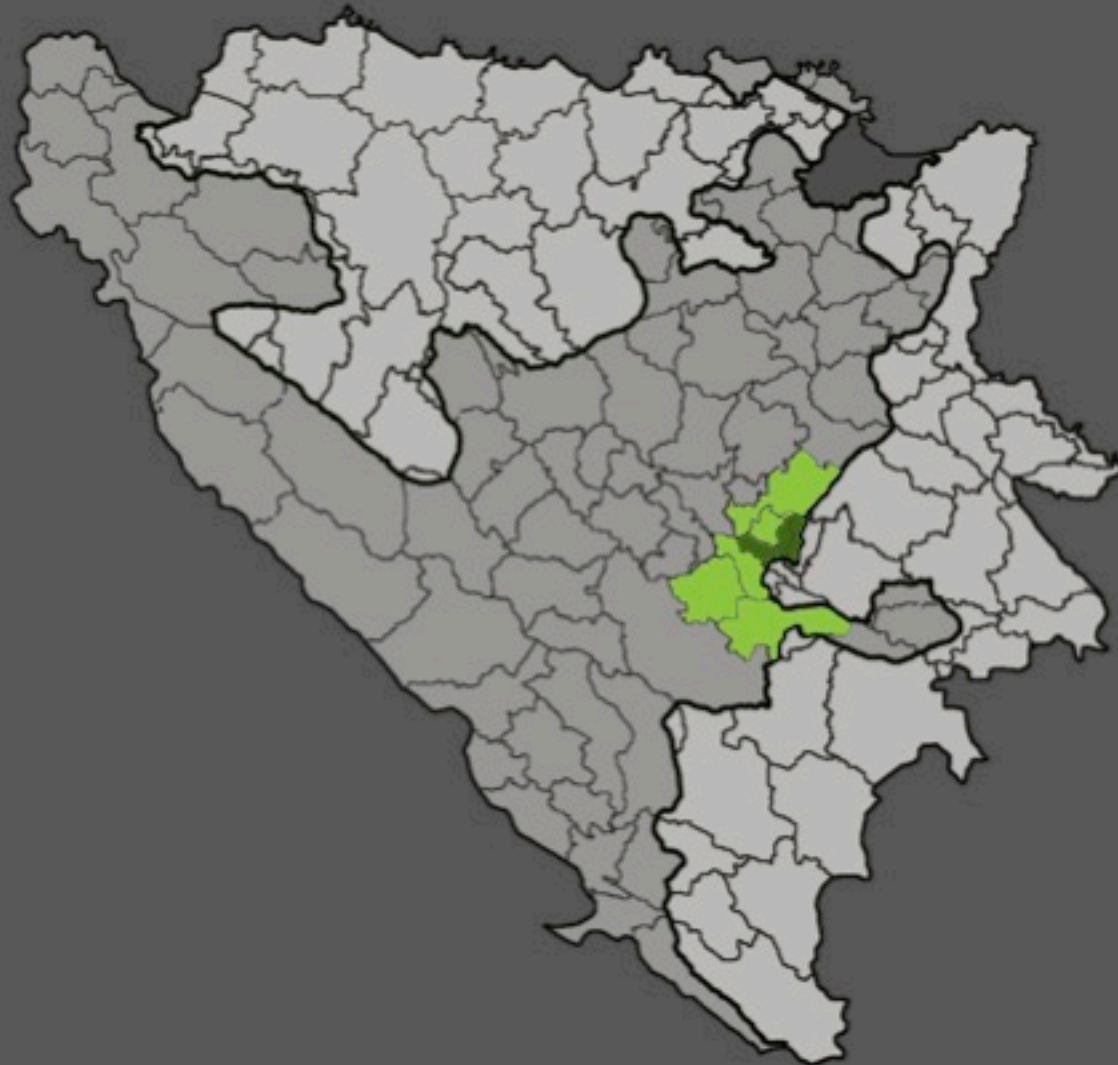
5.2 (Sustainable) Modes of Movement

5.3 Density

## 5.1 Boundaries + Drosscapes

# Cantons of Sarajevo

Sarajevo | Boston



- Sarajevo Cantons
- City of Sarajevo

# Landscape Boundary

Sarajevo | Boston



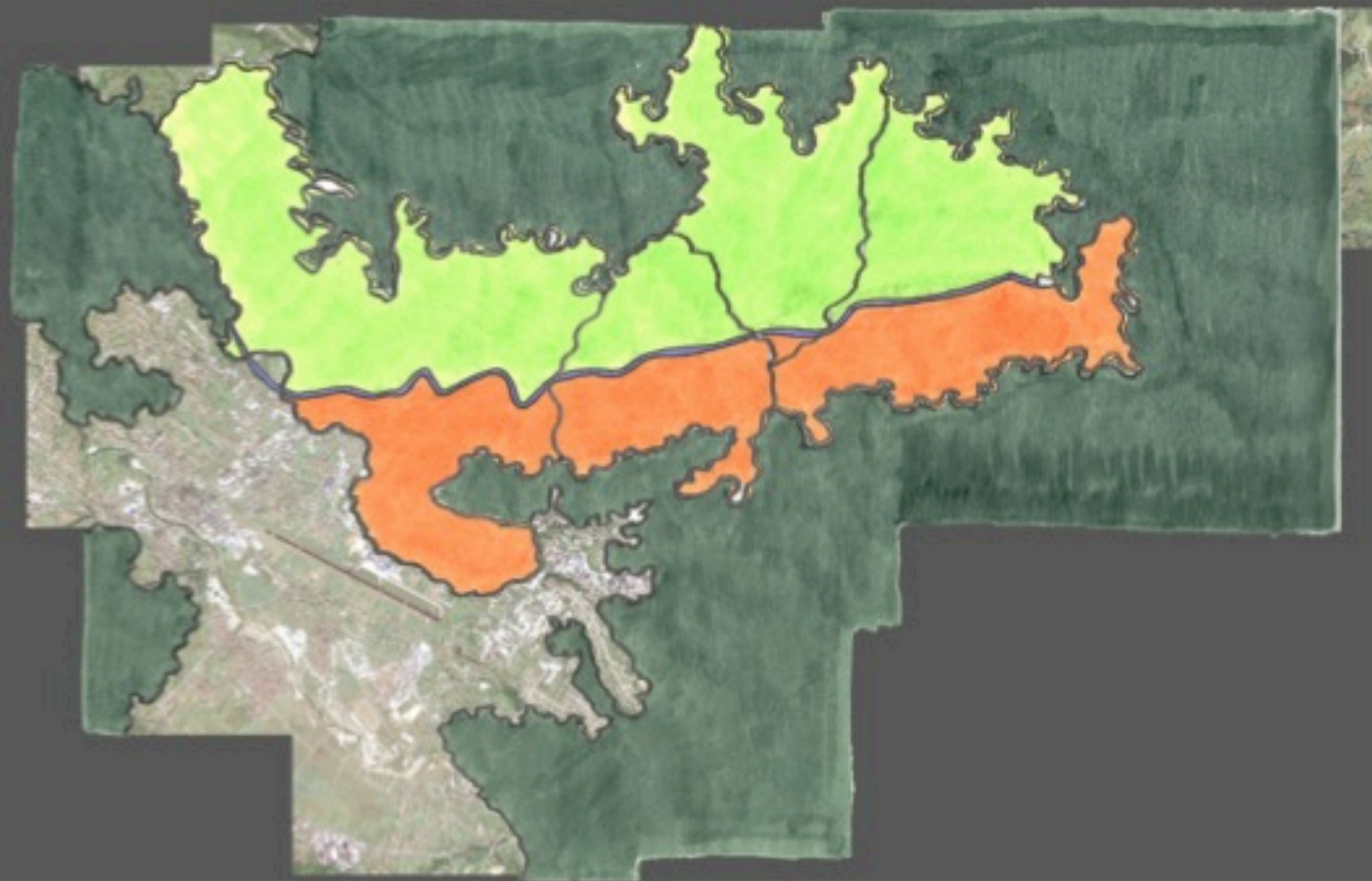
# Municipalities Division

Sarajevo | Boston



# North | South Division

Sarajevo | Boston



# North | South Connections

Sarajevo | Boston



Only physical connection points between north and south sides

# Drosscapes (definition)

Courtesy of Alan Berger

Sarajevo | Boston

- Juxtapositions of a city's landscape
- Distinct boundaries of two different programs
- Unused or underdeveloped areas
- Wasted landscapes; left over from other times of development

# Drosscapes (in Sarajevo)

Sarajevo | Boston



# Drosscapes (in Sarajevo)

Sarajevo | Boston



# Drosscapes (in Sarajevo)

Sarajevo | Boston



# Drosscapes (in Sarajevo)

Sarajevo | Boston



# Novi Grad Connections

Sarajevo | Boston



# Novi Grad Re-Integration

Sarajevo | Boston

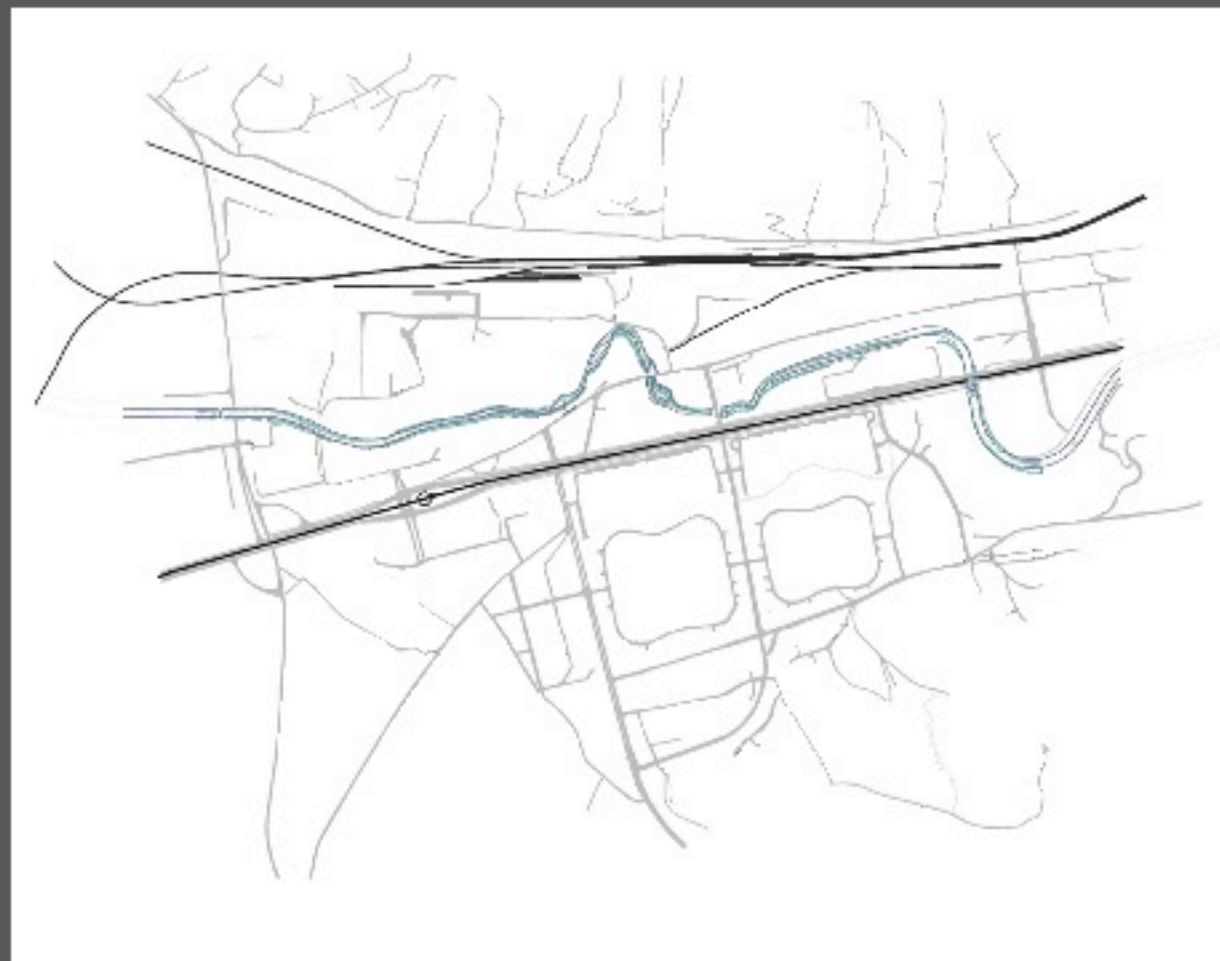
Re-integration  
between north and  
south using drosscape  
areas



## 5.2 (Sustainable) Modes of Movement

# Modes Of Movement

Sarajevo | Boston



EXISTING CONDITIONS

# Modes Of Movement

Sarajevo | Boston



## SARAJEVO EXISTING CONDITIONS

### COLOR KEY

- Train System
- Main Vehicular Transportation
- Tram System
- Secondary Vehicular Transportation
- Miljacka River

Sarajevo utilizes ;  
trams and trolleys in public transportation.

Necessity of work in more directions :

New approach to sustainable design

Better relationships to municipalities and  
dense urban clusters.



## 5.3 Density

# Density

Sarajevo | Boston

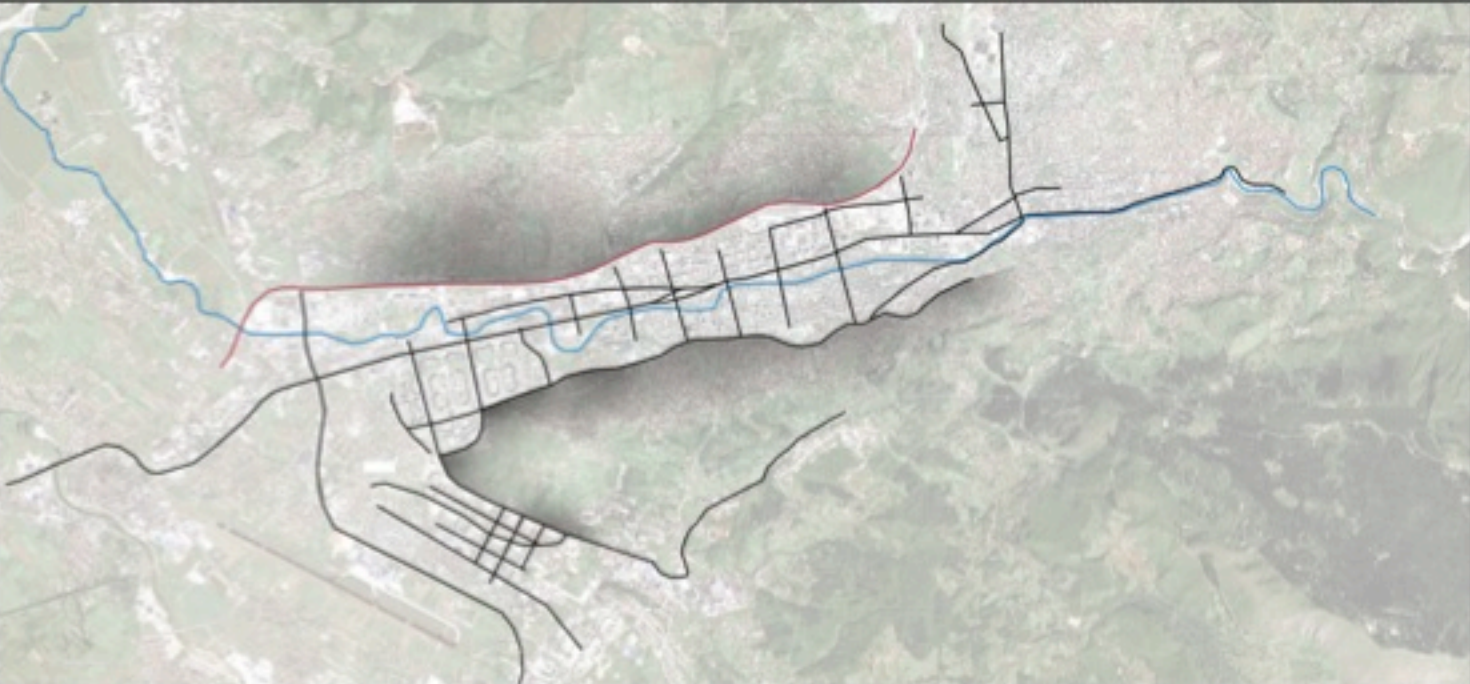
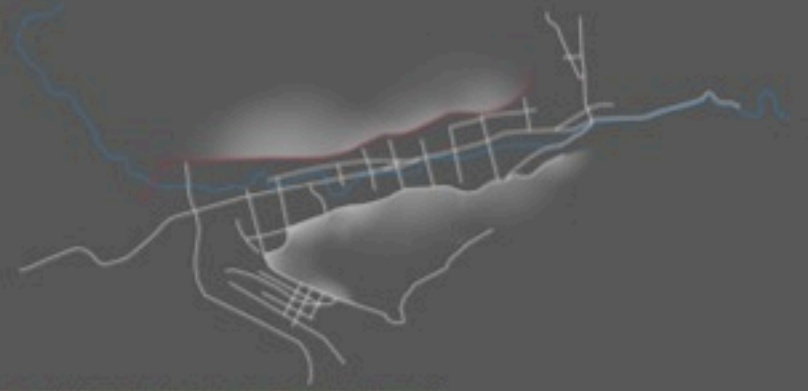
Type: Formal vs Informal



# Density

Sarajevo | Boston

Boundary



# Density

Sarajevo | Boston

## Linearity



# Density

Sarajevo | Boston

## Integration



Thank you

Sarajevo | Boston

**THANK YOU!**  
(a wicked ton)