



WINDOW 3

the "Dormitory City" transformation
sarajevo / workshop / fall 2010.





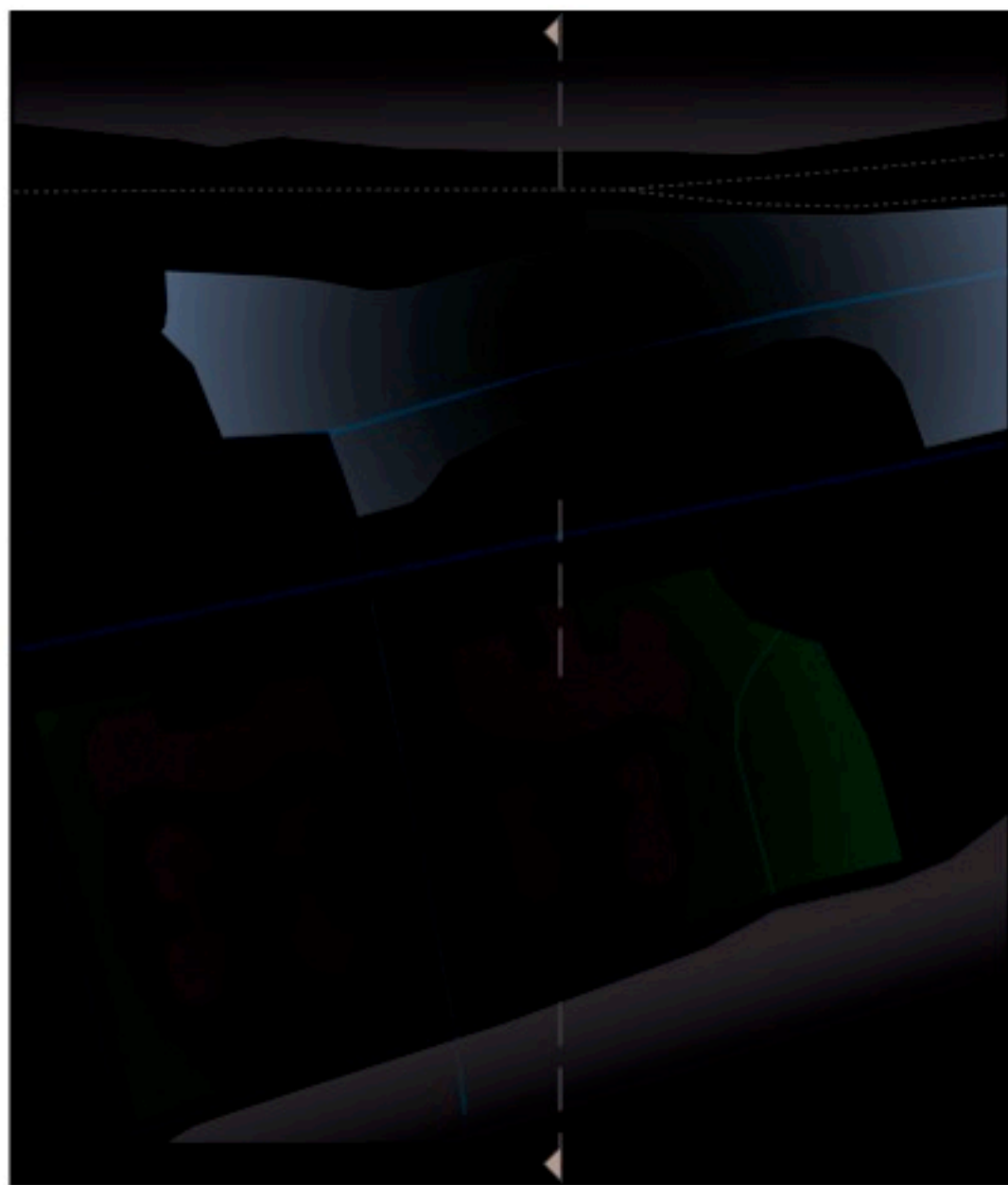
sequence
plan/section



? feelings ?
? explanation why ?
? main questions ?

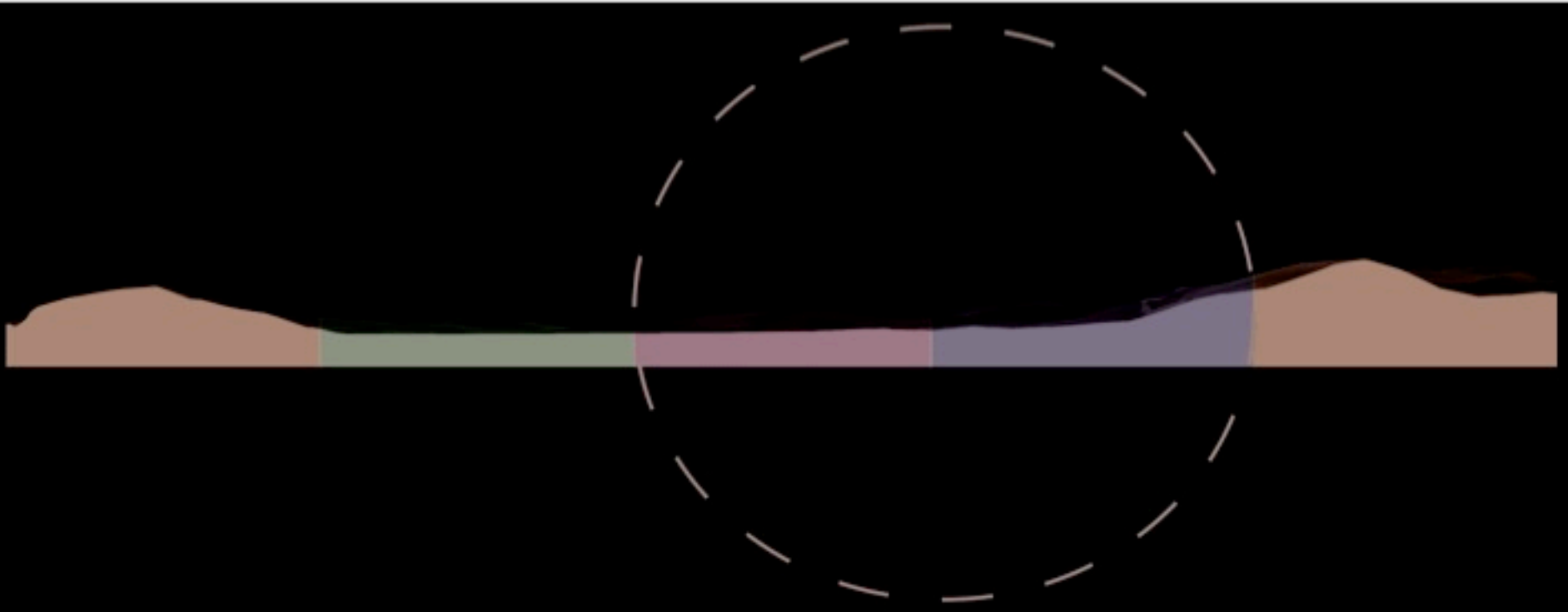


? proposal ?



-  informal housing
-  social housing
-  unused green space
-  brownfield
-  business zone
-  the main road





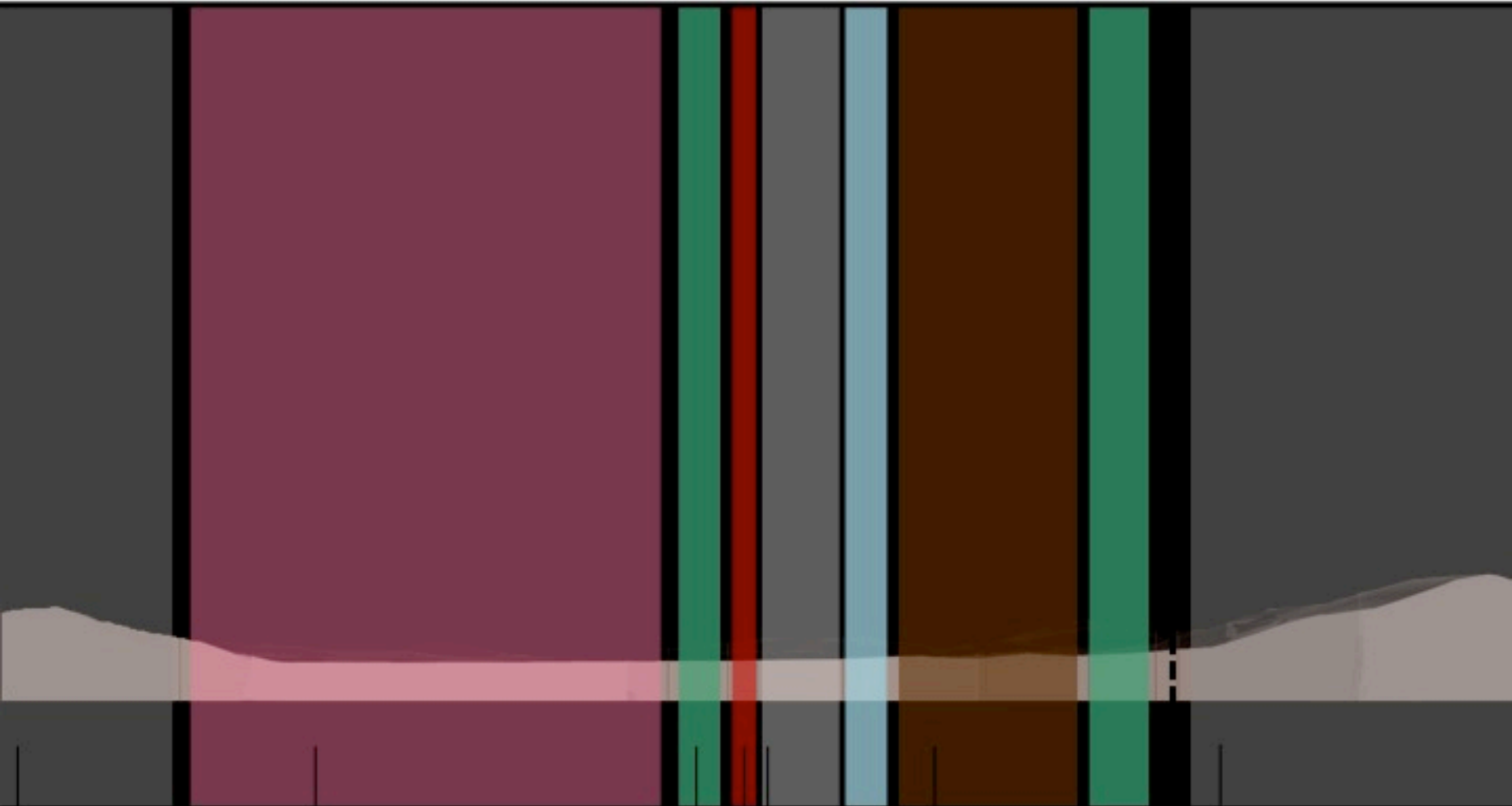
- Informal Housing

- Industrial Zone/
Brownfield

- Open Space

- Social Housing

- Informal Housing



space

the main
road



F : / chaotic / "i wouldn't want to live here" /

P: Human scale vs. Human contidions

Q: What can be done for the change of identity of this space – physically and functionally ???



F : / uncomfortable / small / "unpretty"

P: out of human scale / buildings create a wall / neglected open spaces /

Q: Do the buildings provide "life" for the courtyards or is it the opposite???



the main road

F : /nervous / uncomfortable / lost

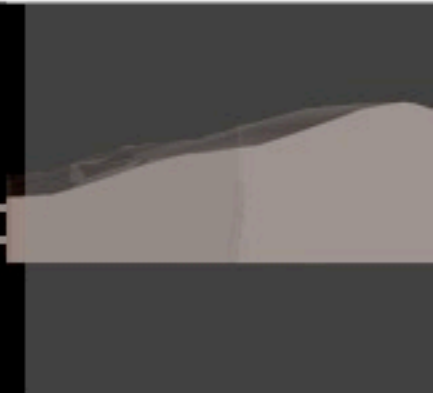
P: size / creates a real physical division / not pedestrian friendly /

Q: What can be done to improve the impression / what has already

d
F : / depressing / scary / desert-like /

P: 80% of the structure abandoned and deteriorating /

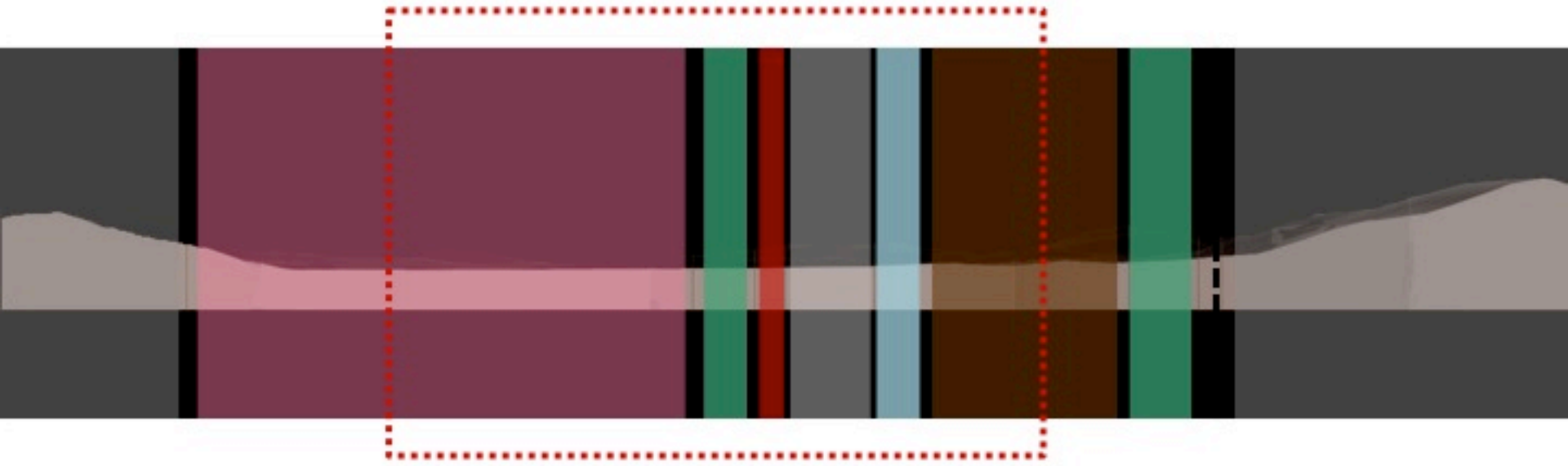
Q: which aspects of the section, besides its size, also represents real potential???



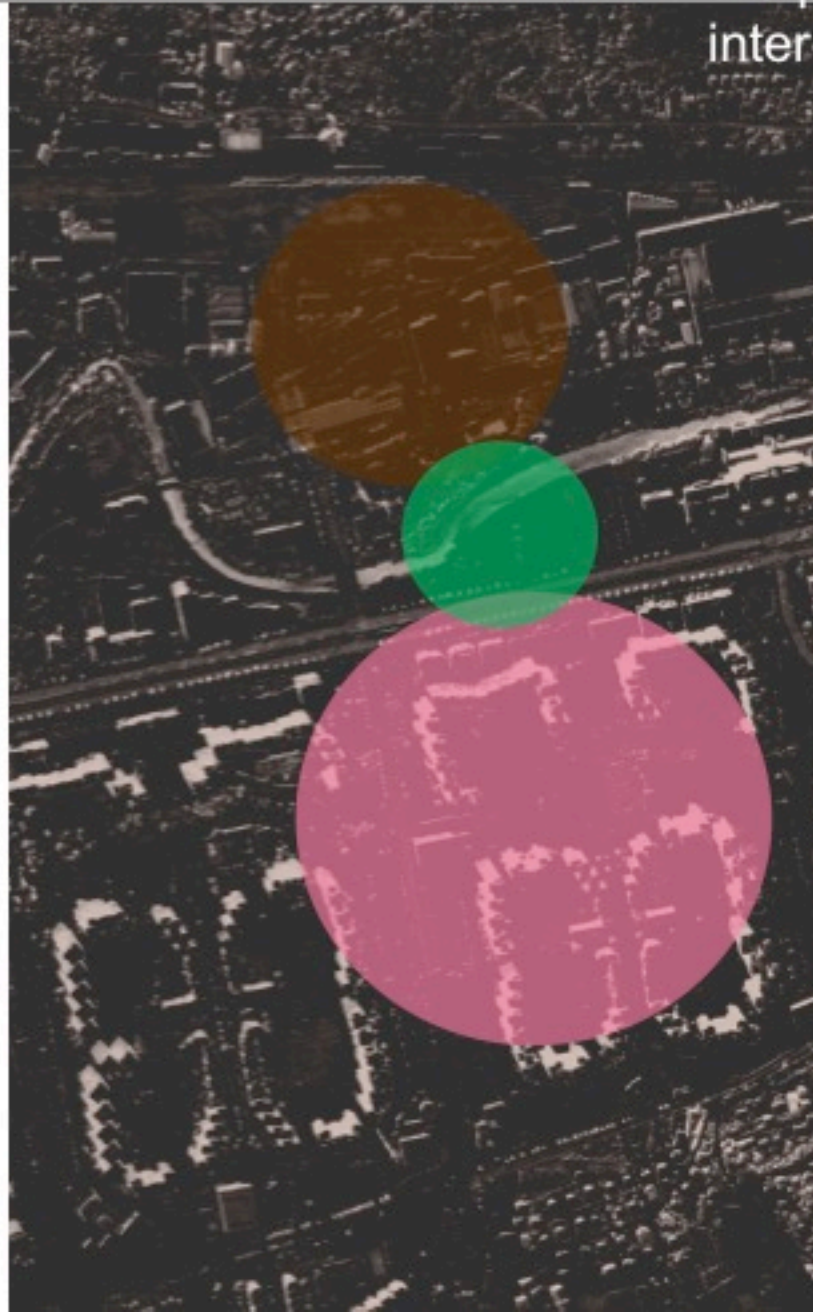
unused green space
F : /non-consciousness /

P: lack of function and utilization

Q: How can these spaces be used to improve and connect the whole site???



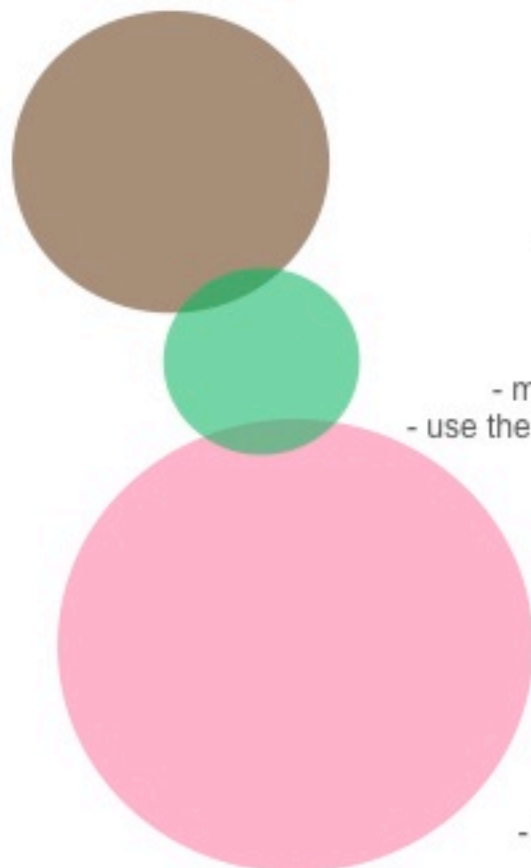
the process as an approach
interest



how to
connect ???

main areas of
interest

connection areas /
transitional space



how to
connect ???

- new residential settlement - ←
- new pedestrian paths -

- move pedestrians away from the street – ←
- use the existing green spaces for pedestrians -

- creating public groundfloor area – ←

- expand the river flow through a new riverbed - ←

-brownfield is the main resource for connection –
-introducing new functions – residential –
recreation – leisure – small business –
- to contribute to the new and the neighbor-
settlements –
- new housing as possible solution for the informal

! to create a connection
between the **two parts** of
the site through both new
structures and functions
! to make the streets more
pedestrian friendly

! to improve the
groundfloor area of the
social housing zone :
commercialize the
structures / accent the
open spaces /

! to use the river and
green spaces as an
important factor of
connection – not

! to come up with **division**
approach to the problem of
existing brownfield – to
use all of its **potentials**
and **resources**

"it is the function of creative man to percieve and to connect the seemingly unconnected"

Thank You!